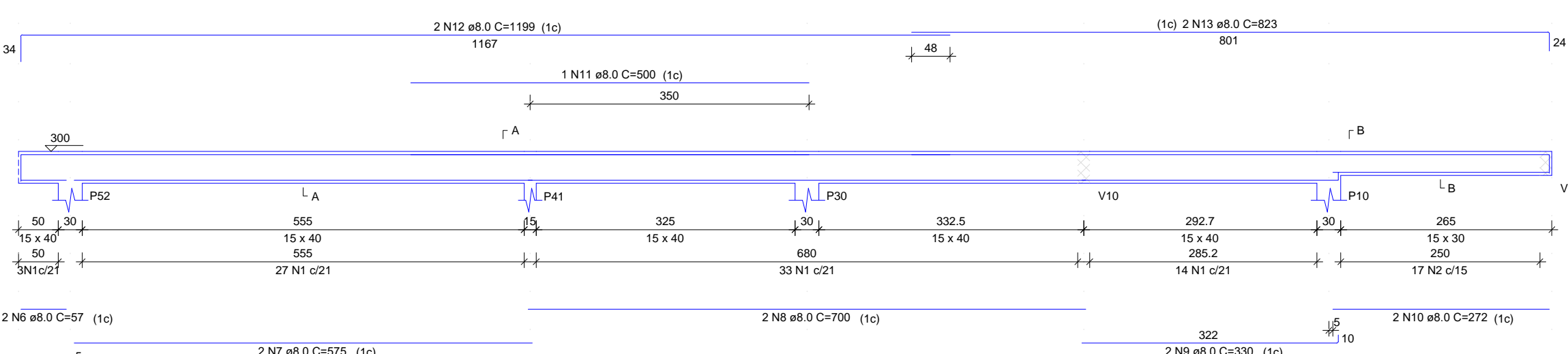
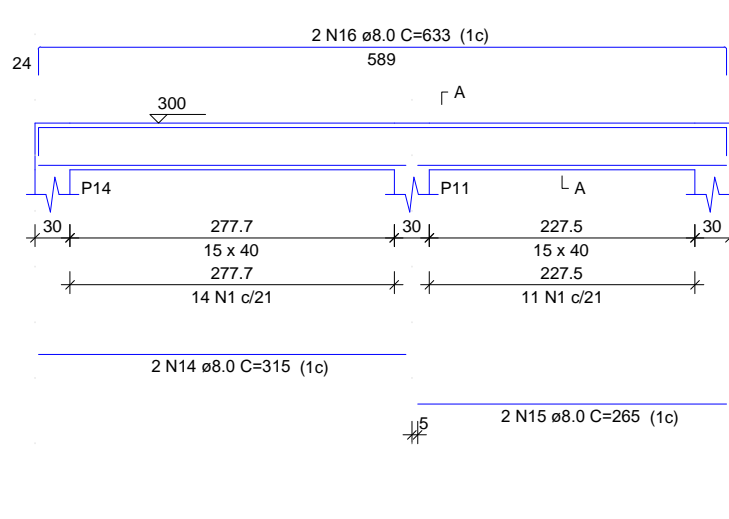


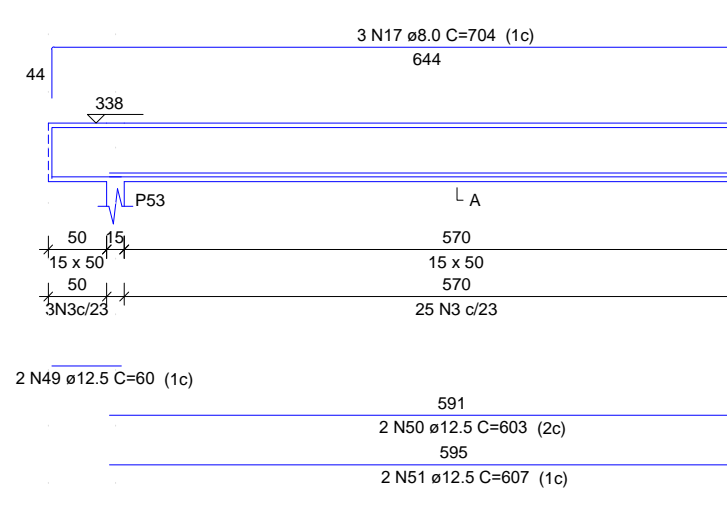
V26



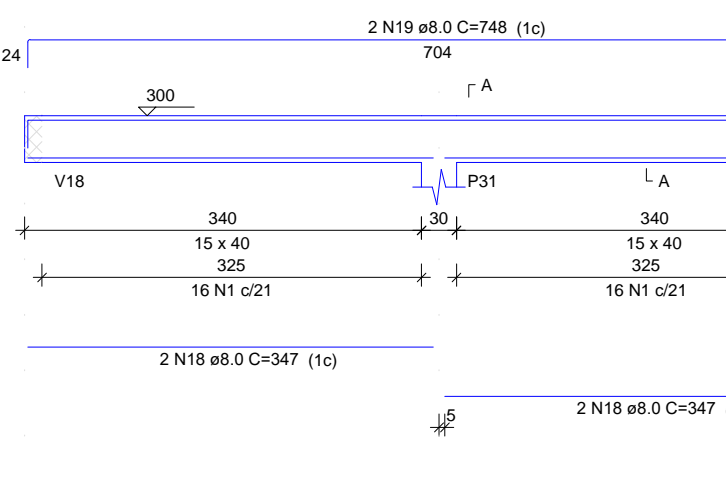
V27



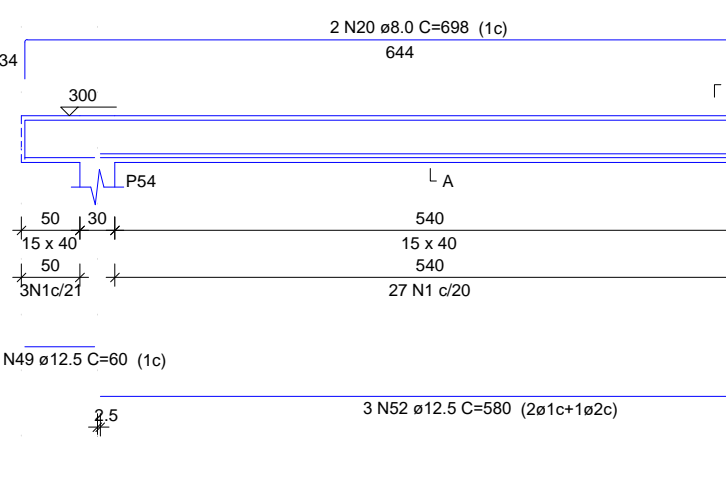
V28



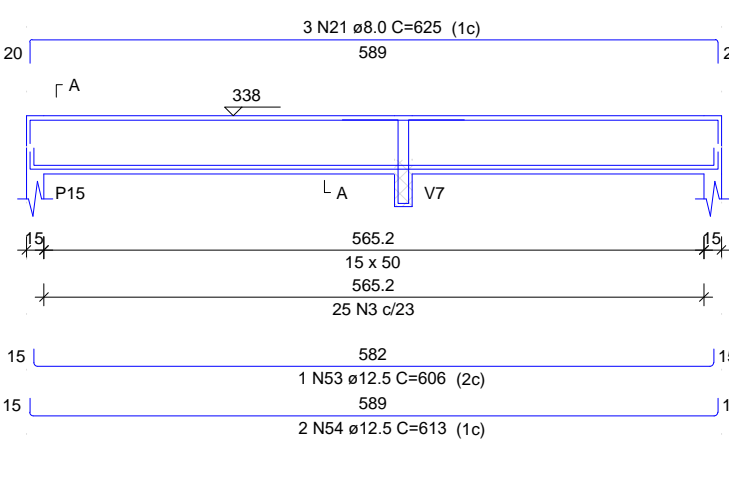
V29



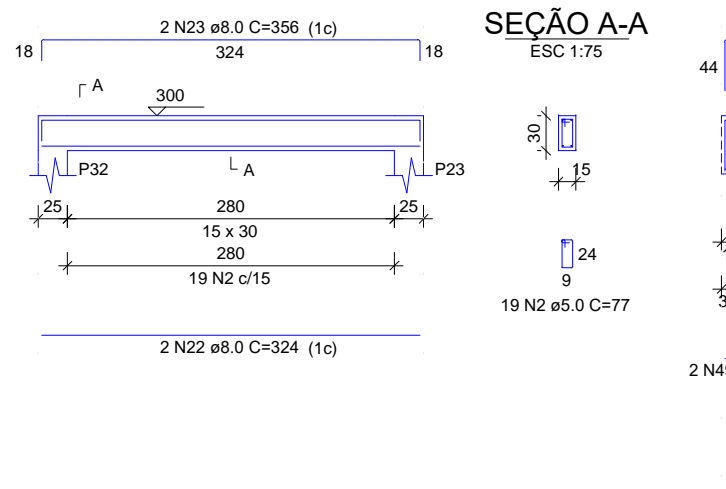
V30



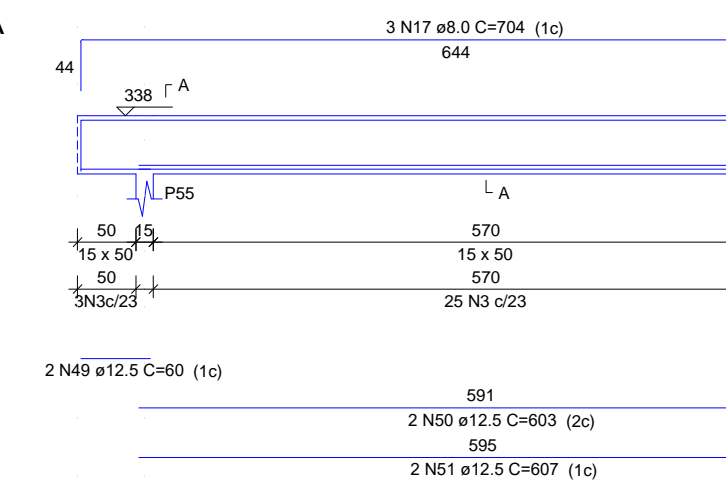
V31



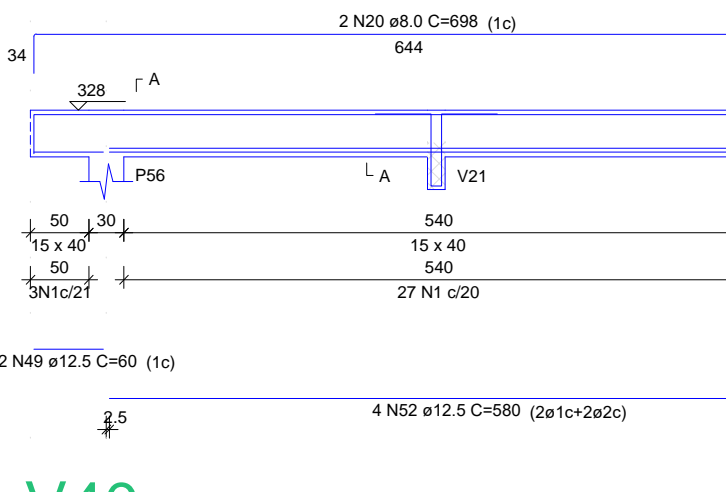
V32



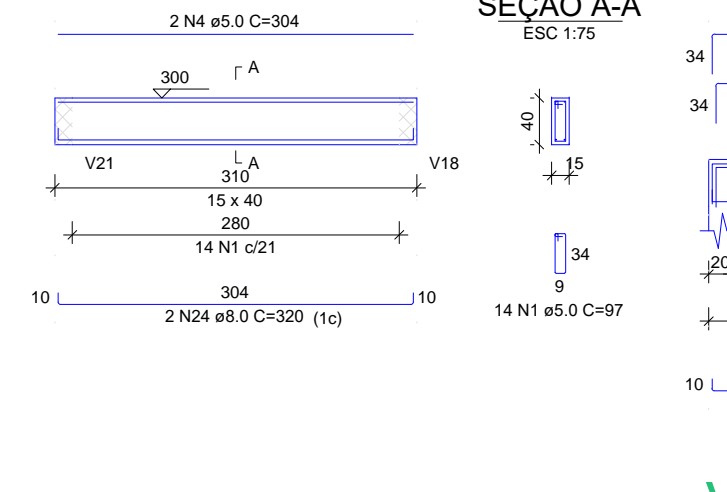
V33



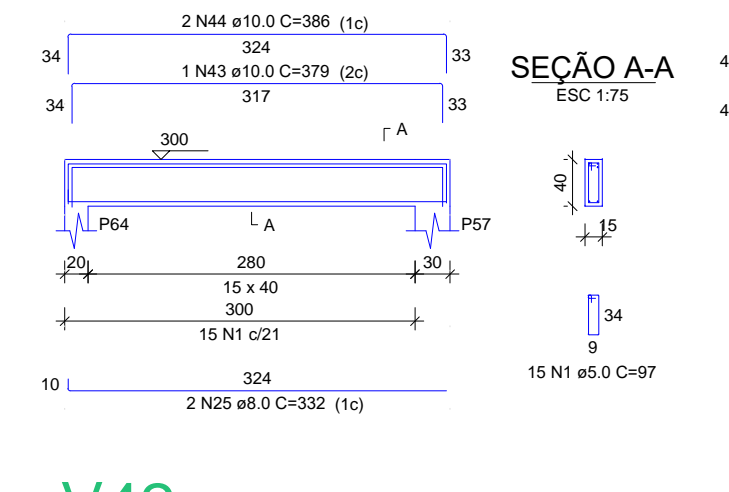
V34



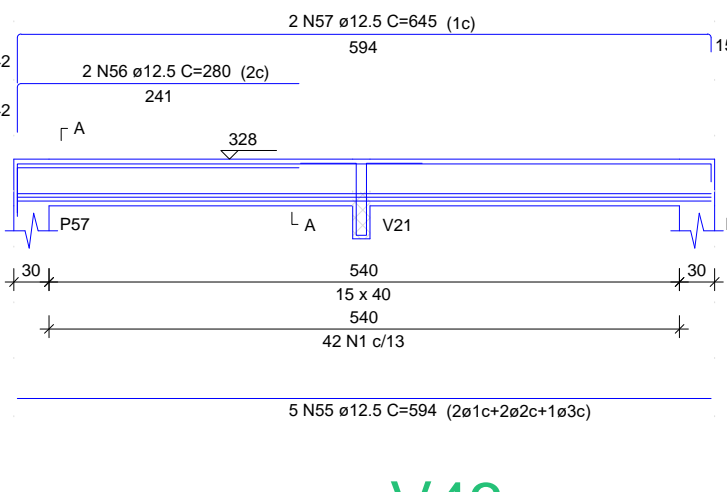
V35



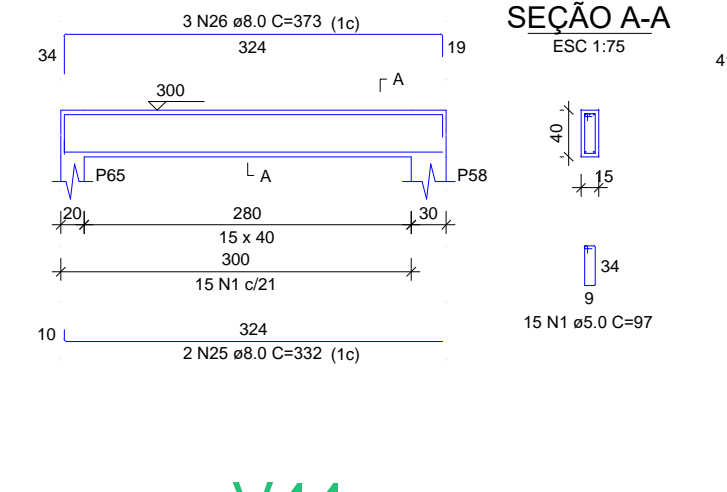
V36



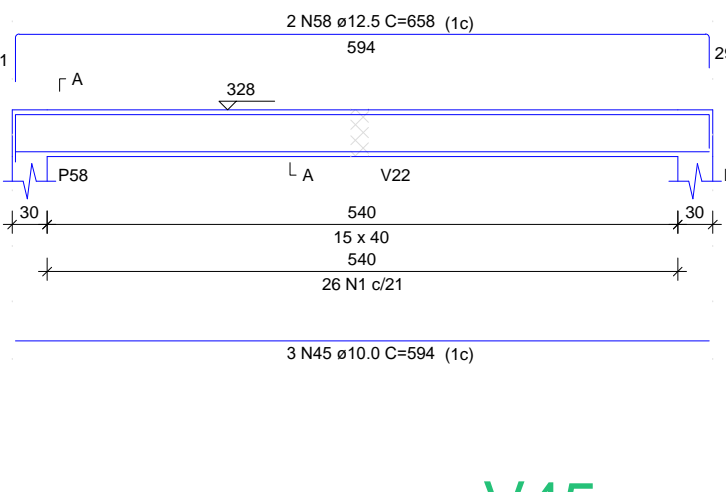
V37



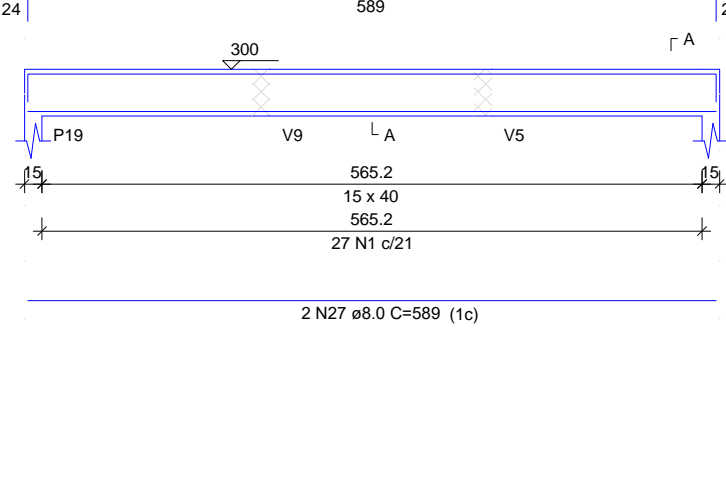
V38



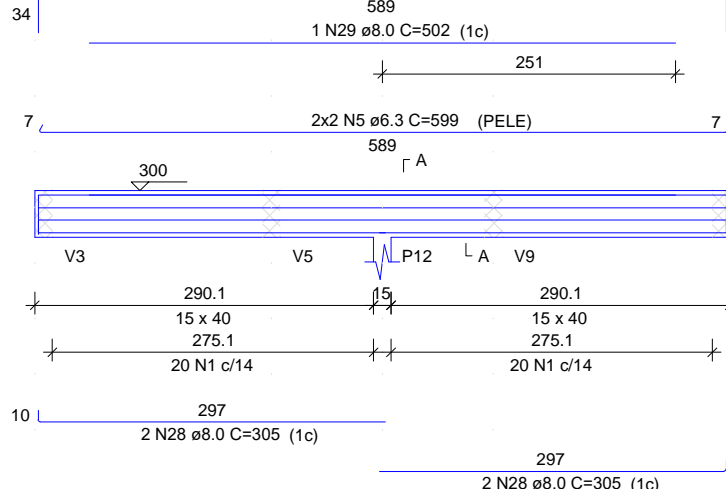
V39



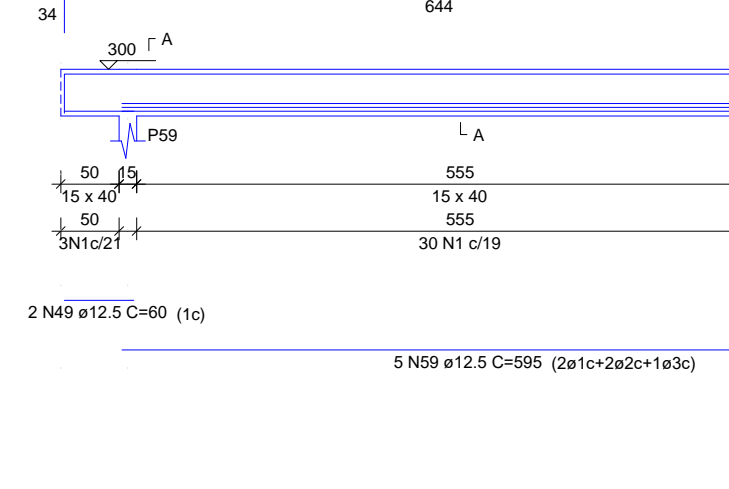
V40



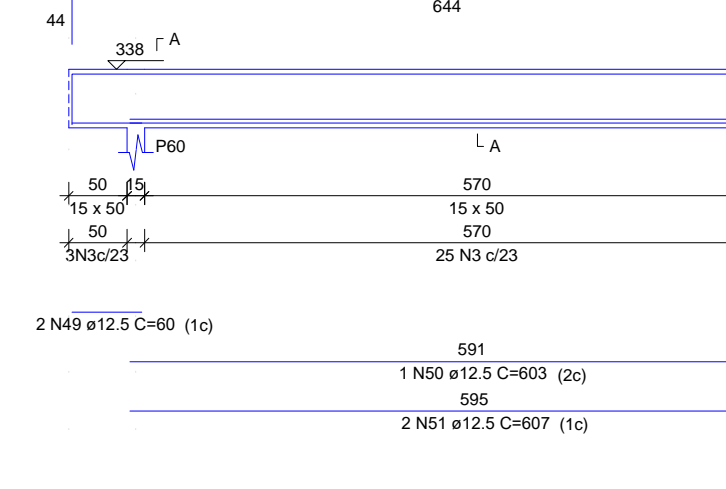
V41



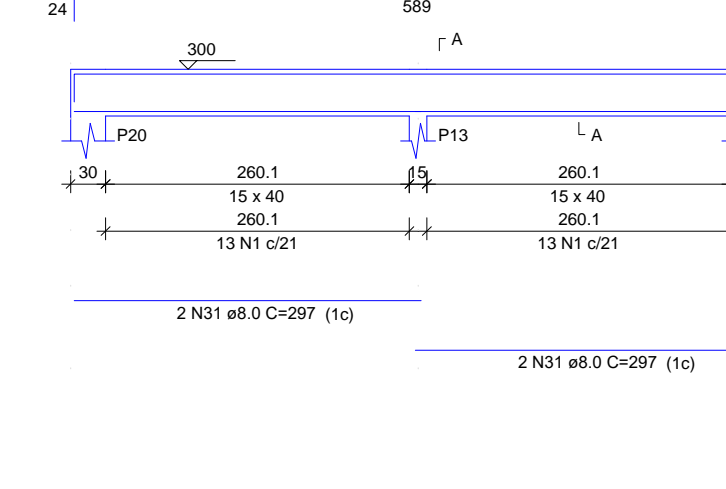
V42



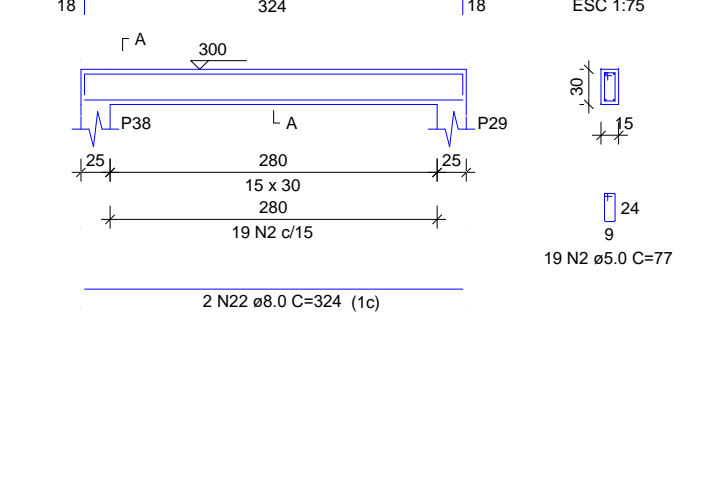
V43



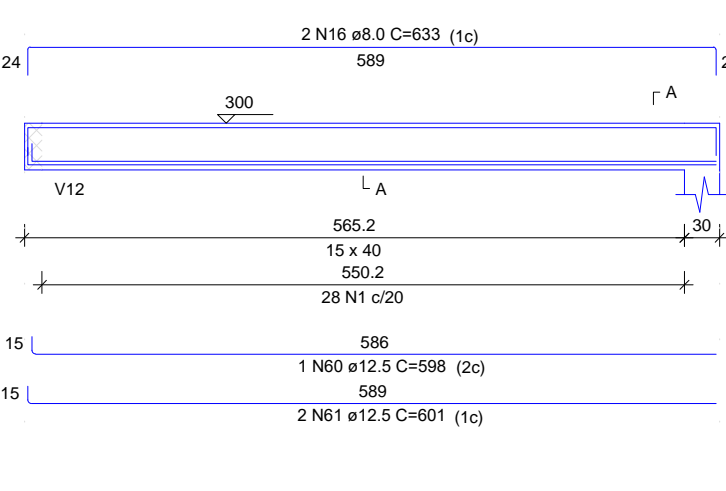
V44



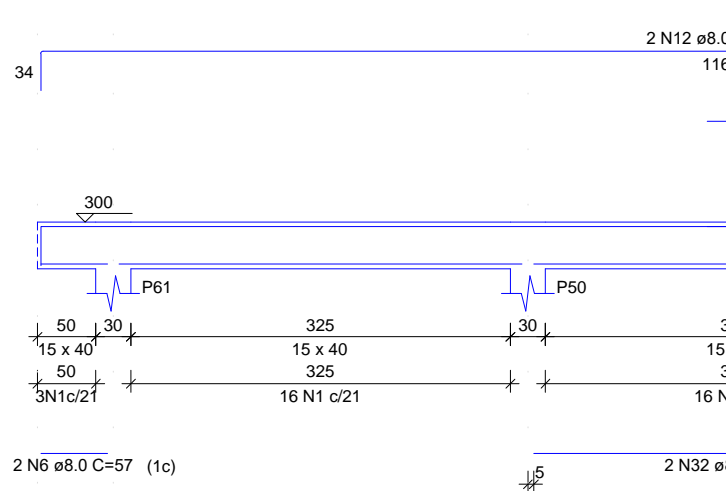
V45



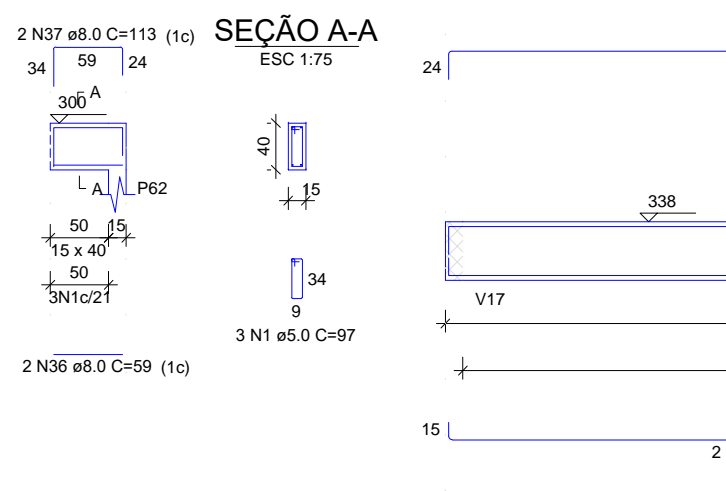
V46



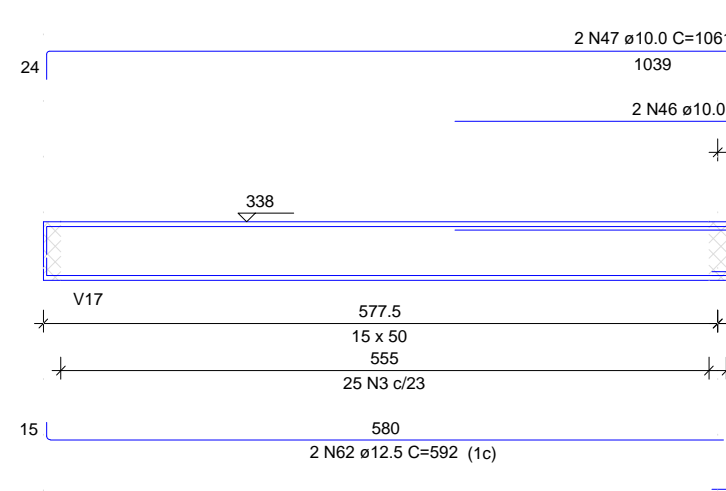
V47



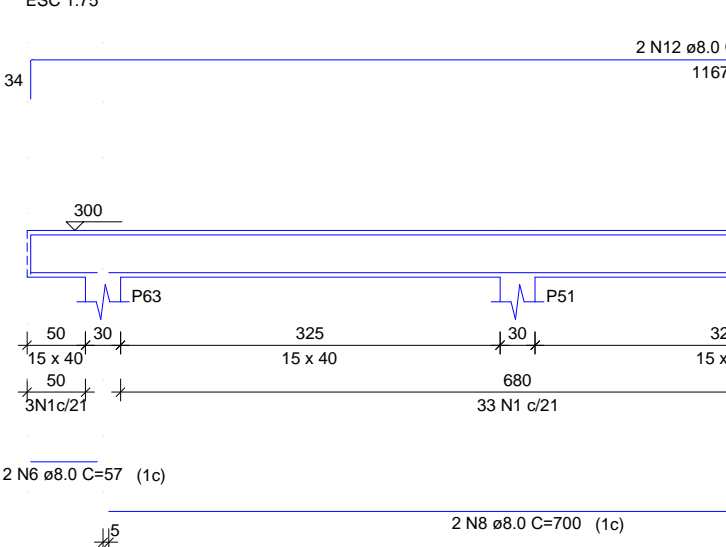
V48



V49



V50



RELAÇÃO DO AÇO

AÇO	N	DIAM (mm)	QUANT	C.LIMIT (cm)	C.TOTAL (cm)
CA60	1	5.0	615	97	59655
V26	2	5.0	85	77	4235
V30	2	5.0	169	117	18903
V32	3	5.0	304	608	608
V38	5	6.3	4	700	2396
V42	6	8.0	6	57	342
V44	7	8.0	4	575	2370
V45	8	8.0	4	700	2800
V47	9	8.0	2	330	660
V50	10	8.0	2	272	544
	11	8.0	1	500	500
	12	8.0	6	1199	7194
	13	8.0	2	823	1646
	14	8.0	2	315	630
	15	8.0	2	265	530
	16	8.0	8	633	5064
	17	8.0	9	704	6336
	18	8.0	4	347	1388
	19	8.0	2	748	1496
	20	8.0	6	698	4188
	21	8.0	3	625	1875
	22	8.0	4	324	1296
	23	8.0	4	356	1424
	24	8.0	2	320	640
	25	8.0	4	332	1328
	26	8.0	3	373	1119
	27	8.0	2	589	1178
	28	8.0	4	305	1220
	29	8.0	1	502	502
	30	8.0	2	653	1306
	31	8.0	4	297	1188
	32	8.0	4	345	1380
	33	8.0	2	577	1154
	34	8.0	1	342	342
	35	8.0	2	243	486
	36	8.0	2	59	118
	37	8.0	2	113	226
	38	8.0	2	587	1174
	39	8.0	1	339	339
	40	8.0	2	824	1648
	41	10.0	1	240	240
	42	10.0	2	230	460
	43	10.0	1	379	379
	44	10.0	2	386	772
	45	10.0	6	594	3564
	46	10.0	2	433	866
	47	10.0	2	1061	2122
	48	10.0	2	207	414
	49	12.5	12	60	720
	50	12.5	5	603	3015
	51	12.5	6	607	3642
	52	12.5	7	580	4560
	53	12.5	1	608	608
	54	12.5	2	613	1226
	55	12.5	5	584	2920
	56	12.5	2	290	580
	57	12.5	2	645	1290
	58	12.5	2	658	1316
	59	12.5	5	595	2975
	60	12.5	1	598	598
	61	12.5	2	601	1202
	62	12.5	2	592	1184
	63	12.5	1	598	598
	64	12.5	2	602	1204

RESUMO DO AÇO

AÇO	DIAM (mm)	C.TOTAL (m)	PESO + 10% (kg)
CA60	6.3	24	6.4
	8.0	556.6	241.2
	10.0	70.2	47.6
	12.5	271.7	287.9
	5.0	831	140.9

PESO TOTAL (kg)
 CA60 583.1
 CA60 140.9

Volume de concreto (C-30) = 10,25 m³
 Área de forma = 132,38 m²

COR	ESP.PENA
01	0.70
02	0.50
03	0.30
04	0.40
05	0.70
06	0.20
07	0.20
08	0.08
09	0.10
11	1.06
13	1.56



PROPRIETÁRIO _____

CALCULO _____

CONSTRUÇÃO _____

APROVO PM - _____

Nº	DATA	REVISÃO PROJETO:	DESENHO	APROVAÇÃO
02				
01				

CLIENTE: MUNICÍPIO DE MARCO

LOCAL: _____

CONTEÚDO: PLANTA DE PAGINAÇÃO

1 Detalhamento das Vigas Nível 300

2 _____

3 _____

4 _____

5 _____

ESCALA: _____ DESENHO: SEINFRA PRANCHA: _____

INDICADA DATA: SETEMBRO/2022

07/08



AV. PREFEITO GUIDO DOTTREY, 519
 CENTRO - MARCO - CE 14090-000
 BR 366A,1210 J B 366A-1915
 WWW.MARCO-CE.GOV.BR
 CNPJ: 07.546.516/0001-47