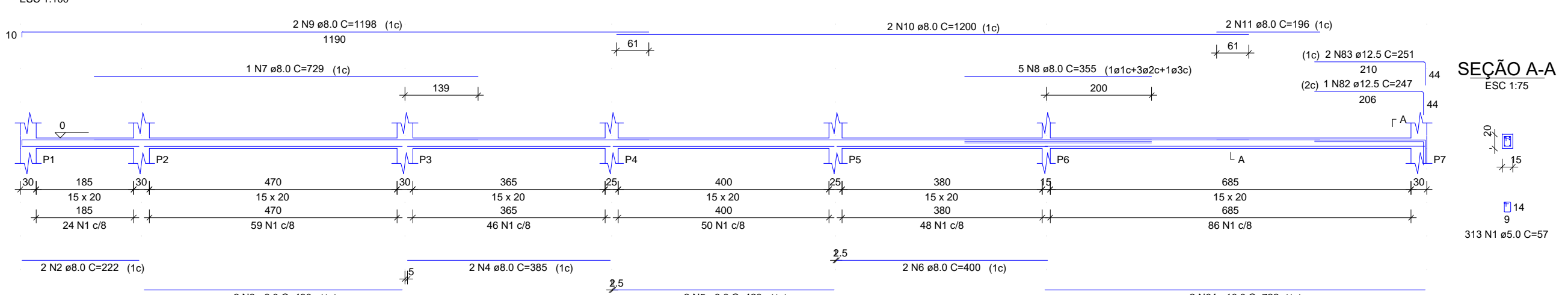
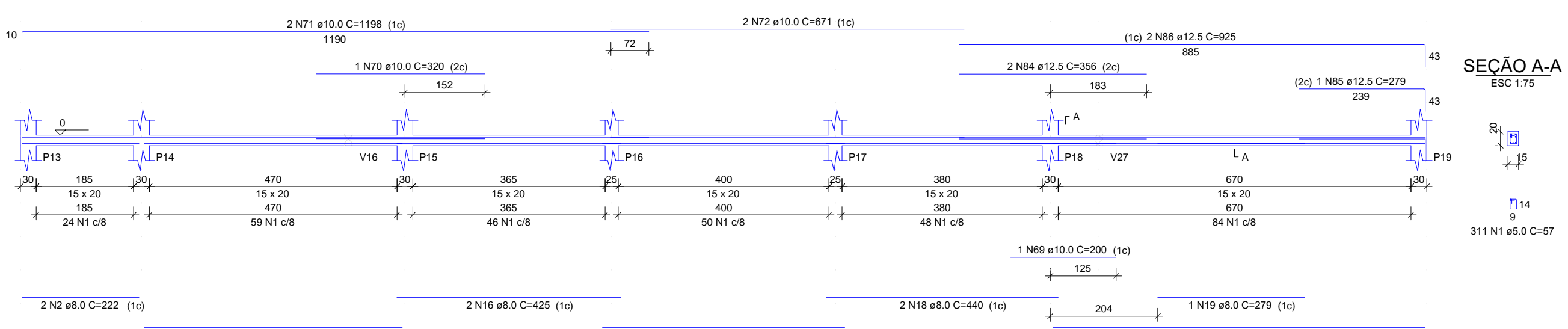


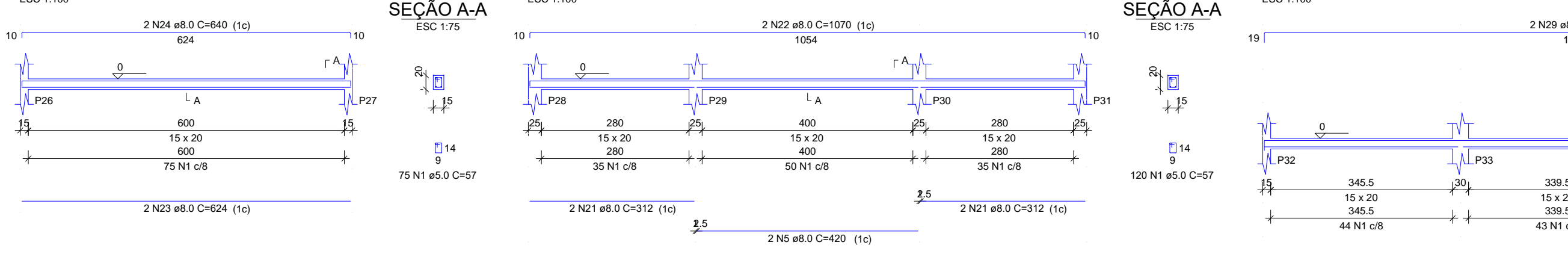
V1



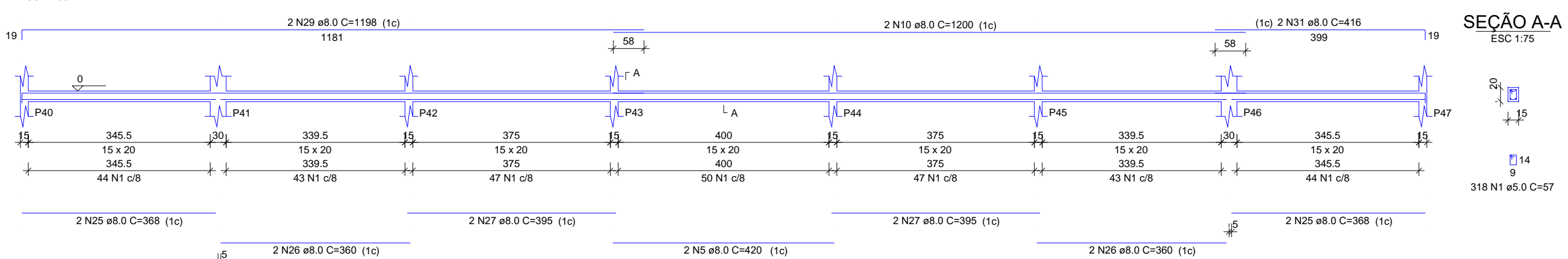
V5



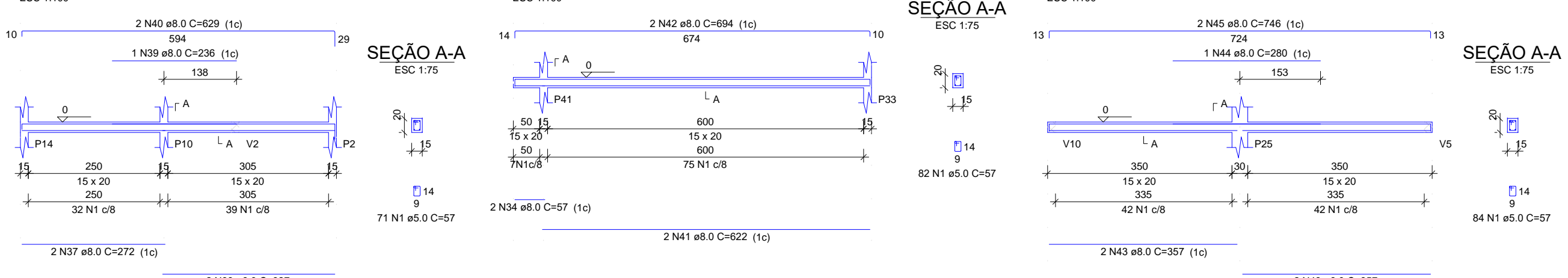
V8



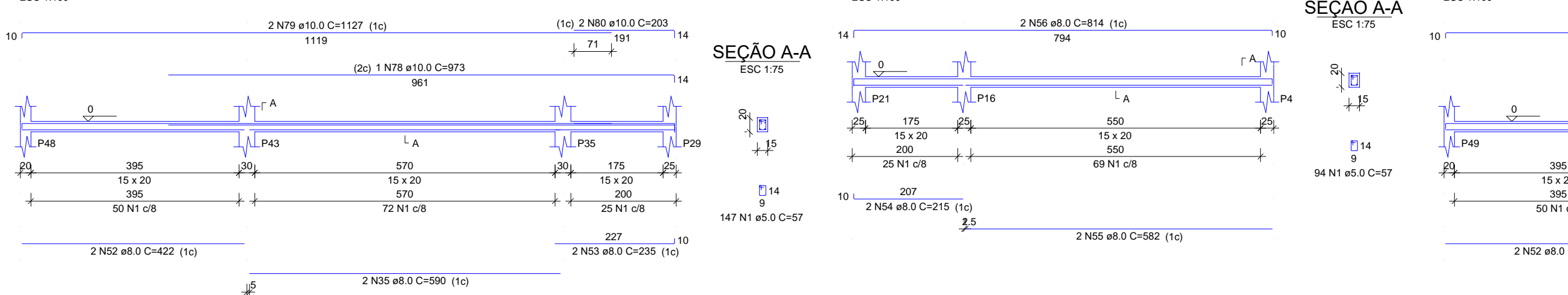
V11



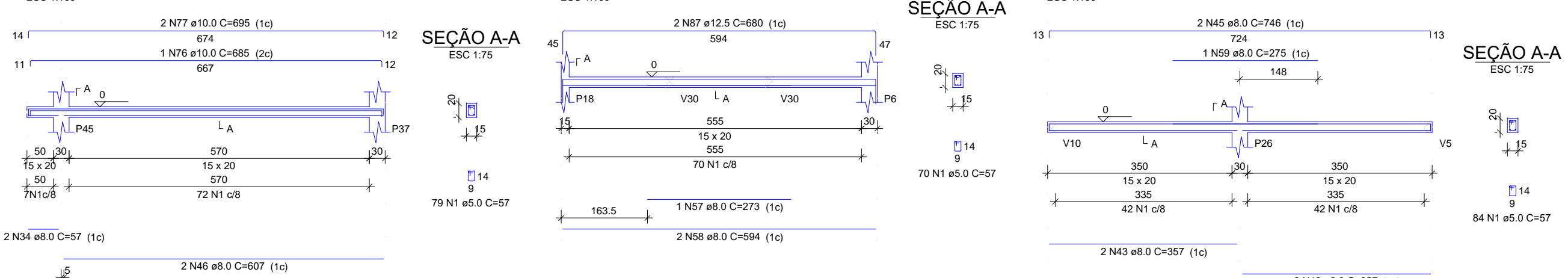
V14



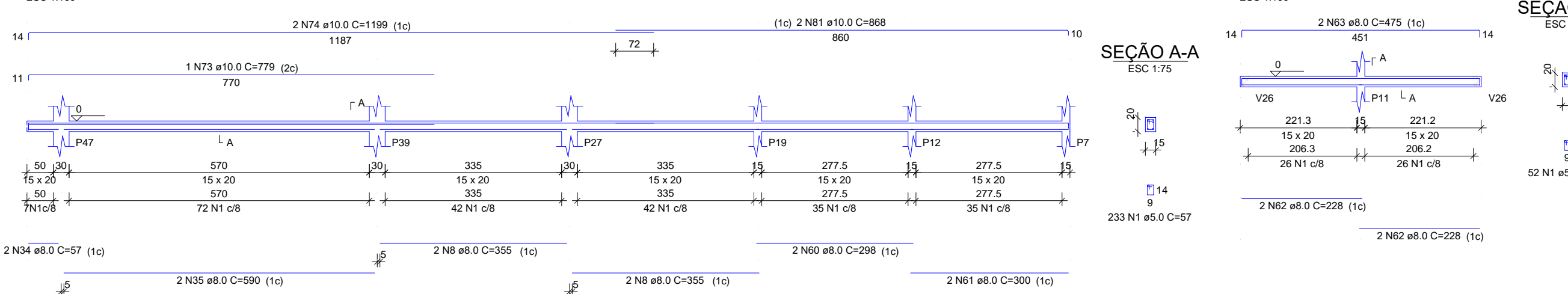
V20



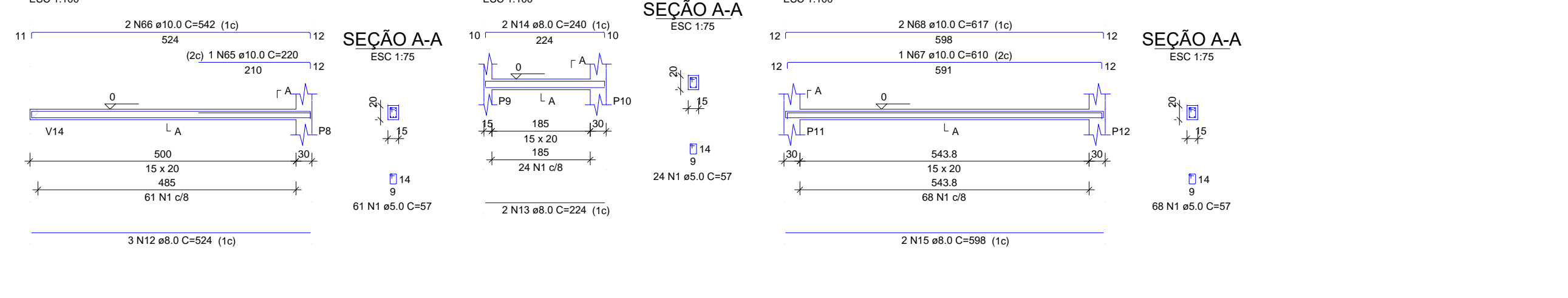
V25



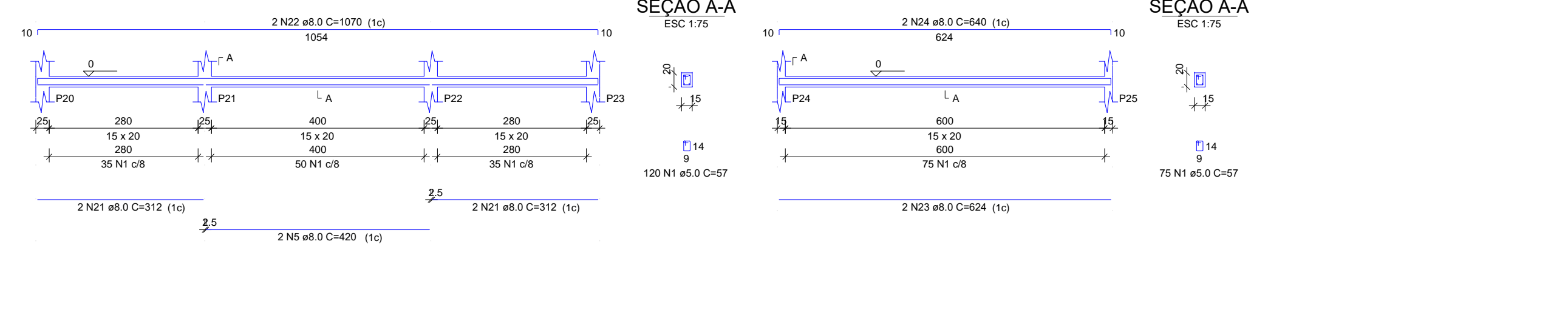
V29



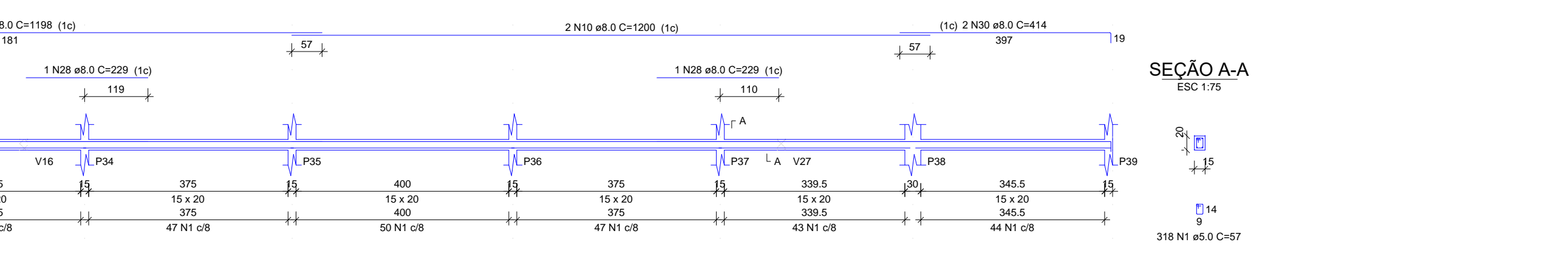
V2



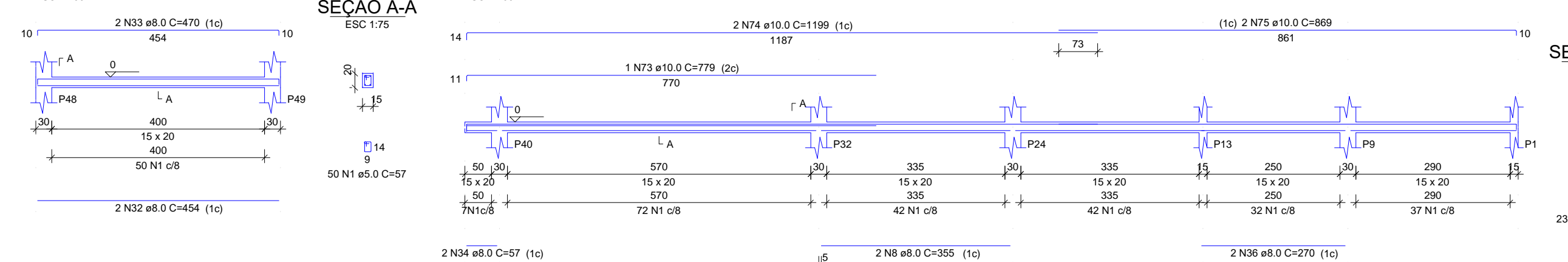
V6



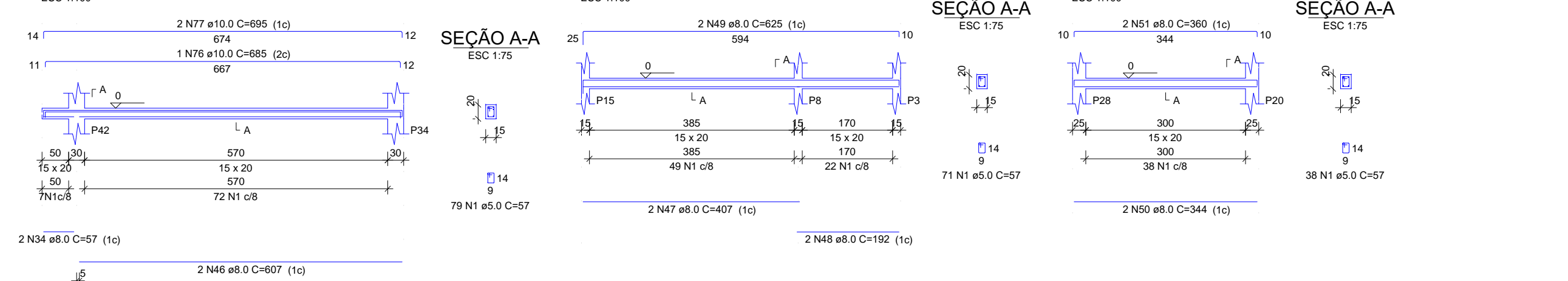
V9



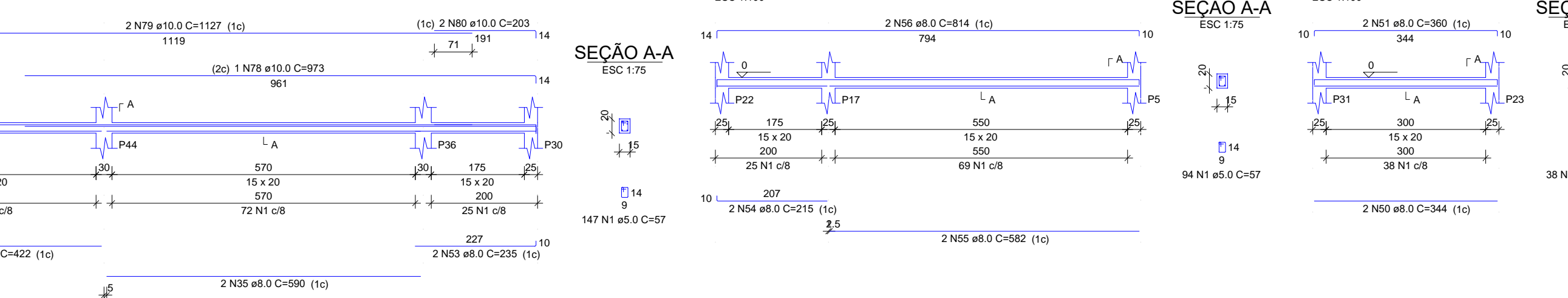
V12



V15



V21



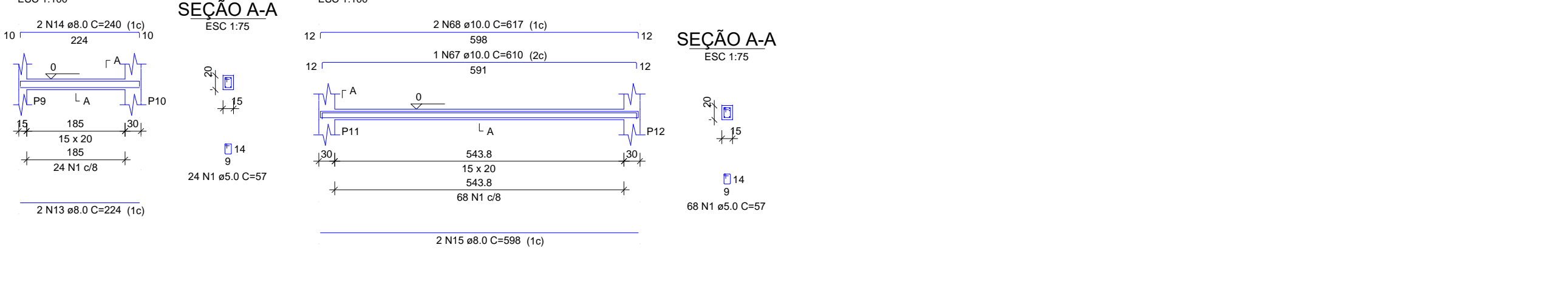
V26



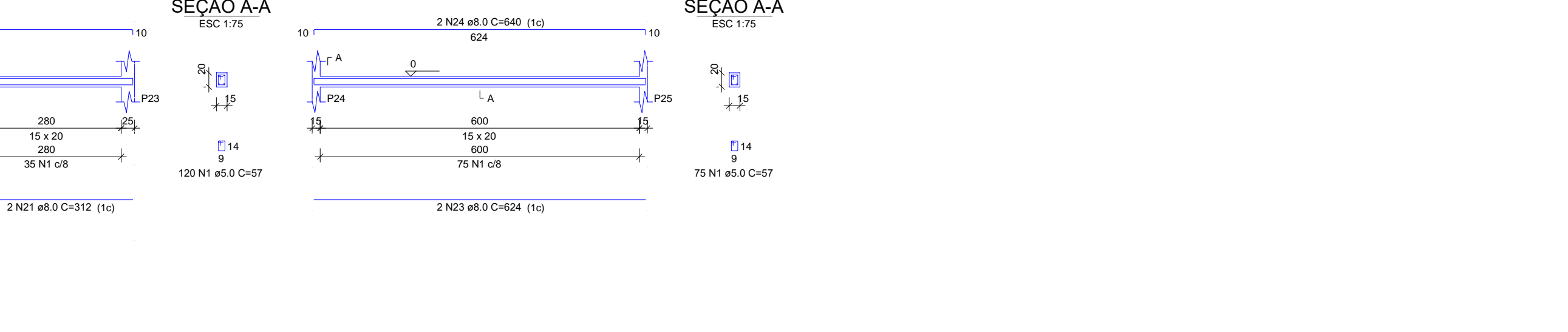
V30



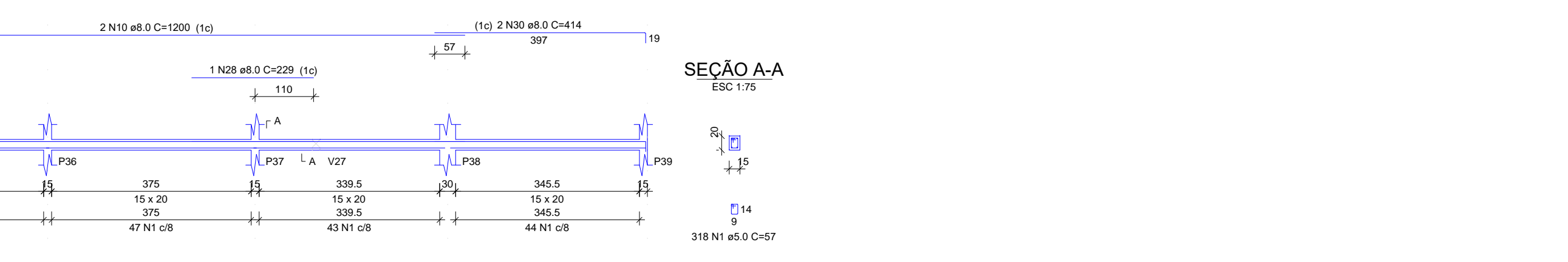
V3



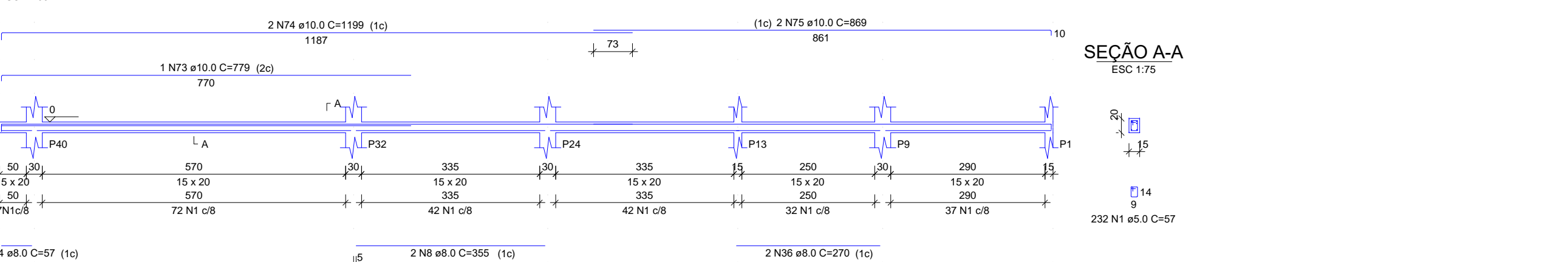
V7



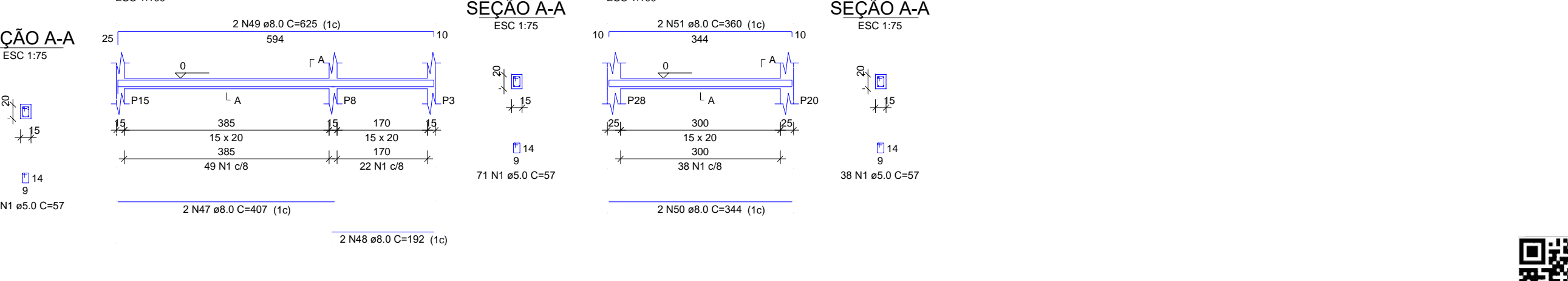
V10



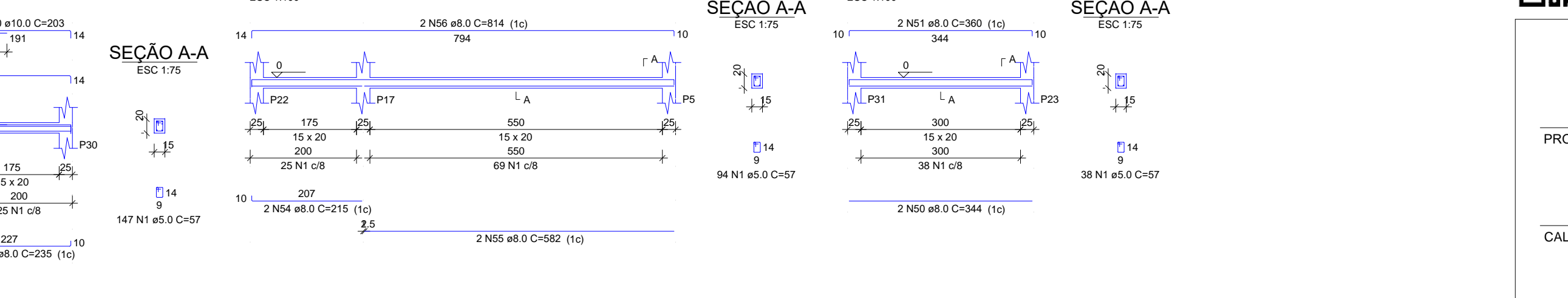
V13



V17



V22



V27



V28



V4



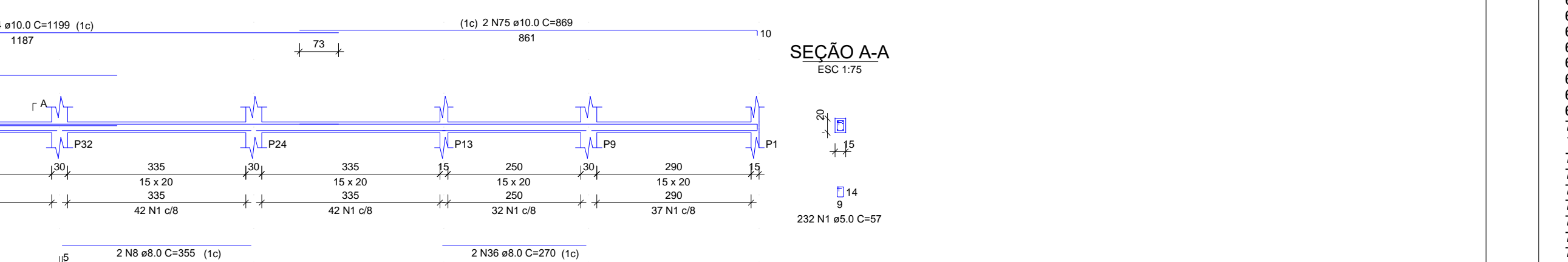
V19



V16



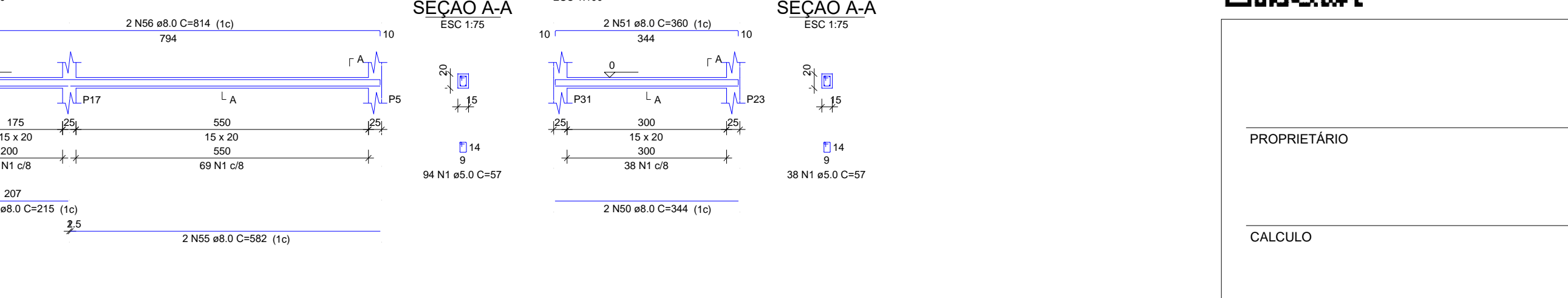
V18



V23



V24



V28



V30



RELAÇÃO DO AÇO

Table with columns: AÇO, N, DIAM (mm), QUANT, C.UNIT (cm), C.TOTAL (cm). Lists steel reinforcement quantities for various beams.

RESUMO DO AÇO

Summary table with columns: AÇO, DIAM (mm), C. TOTAL (m), PESO +10% (kg). Shows total steel weight and concrete volume.



Color and finish table with columns: COR, ESP. PENNA, DIAM. Lists colors and diameters for reinforcement bars.

Form for project details including PROPRIETÁRIO, CÁLCULO, and CONSTRUÇÃO fields.

Approval and signature section with fields for REVISÃO, PROJETO, CLIENTE, LOCAL, CONTEÚDO, ESCALA, DESENHO, and DATA.



MUNICÍPIO DE MARCO

AV. PREFEITO GILDO DEFFENBERG, S/N CENTRO - MARCO - CE 14090-000

BR 364-A, 1210 J B 364-A-1115

CEP: 07.546-51/05001-47

SETEMBRO/2022 03/06