

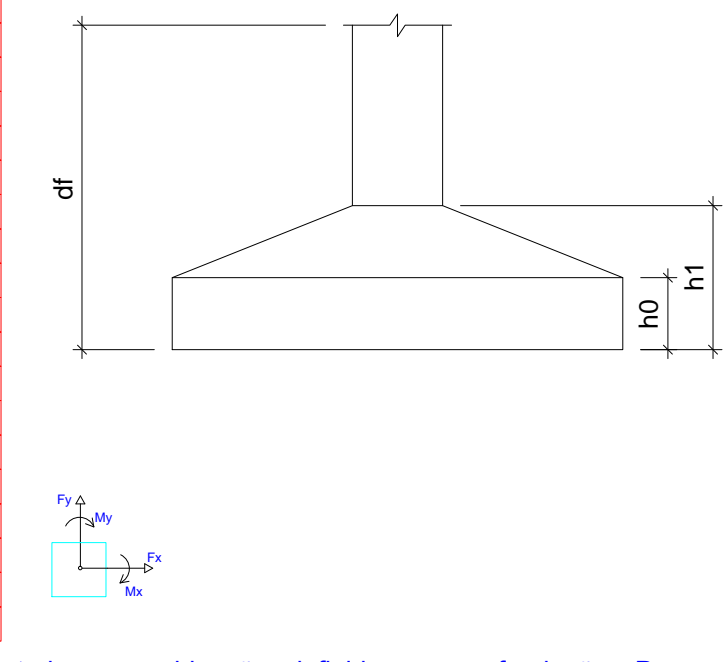
Planta de localização
escala 1:100

Nome	Seção (cm)	X (cm)	Y (cm)	Lado A (cm)	Lado B (cm)	Lado H (cm)	h0 / ha (cm)	h1 / hb (cm)	df (cm)
P1	25x25	341.75	1162.70	120	120	15	15	25	150
P2	25x25	1264.25	1162.70	90	90	15	15	25	150
P3	25x25	1690.95	1162.70	90	90	15	15	25	150
P4	25x25	2065.95	1162.70	90	90	15	15	25	150
P5	15x30	3315.10	1157.70	80	90	15	15	25	150
P6	15x30	3715.10	1157.70	80	90	15	15	25	150
P7	15x30	341.75	935.00	70	80	20	20	150	150
P8	15x30	341.75	942.50	80	80	15	15	25	150
P9	15x30	649.25	935.00	70	80	20	20	150	150
P10	15x30	956.75	942.50	70	80	20	20	150	150
P11	15x30	1264.25	935.00	80	90	15	15	25	150
P12	15x30	1695.95	935.00	80	90	15	15	25	150
P13	15x30	2060.95	935.00	80	90	15	15	25	150
P14	15x30	2492.62	935.00	80	90	15	15	25	150
P15	15x30	2800.11	942.50	80	90	15	15	25	150
P16	15x30	3107.60	935.00	70	80	20	20	150	150
P17	15x30	3315.10	942.50	80	90	15	15	25	150
P18	15x30	3722.60	935.00	80	90	15	15	25	150
P19	15x30	341.75	610.00	90	100	15	15	25	150
P20	15x30	649.25	610.00	90	100	15	15	25	150
P21	15x30	1264.25	610.00	90	100	15	15	25	150
P22	15x30	1694.45	610.00	80	90	15	15	25	150
P23	15x30	2060.95	610.00	80	90	15	15	25	150
P24	15x30	2492.62	610.00	90	100	15	15	25	150
P25	15x30	3107.60	610.00	90	100	15	15	25	150
P26	15x30	3722.60	610.00	90	100	15	15	25	150
P27	15x30	341.75	285.00	70	80	20	20	150	150
P28	15x30	341.75	277.50	80	90	15	15	25	150
P29	15x30	649.25	285.00	70	80	20	20	150	150
P30	15x30	956.75	277.50	70	80	20	20	150	150
P31	15x30	1264.25	285.00	70	80	20	20	150	150
P32	15x30	1695.95	285.00	80	90	15	15	25	150
P33	15x30	2060.95	285.00	80	90	15	15	25	150
P34	15x30	2492.60	285.00	70	80	20	20	150	150
P35	15x30	2800.11	277.50	80	90	15	15	25	150
P36	15x30	3107.60	285.00	70	80	20	20	150	150
P37	15x30	3315.10	277.50	80	90	15	15	25	150
P38	15x30	3715.10	277.50	70	80	20	20	150	150
P39	20x40	1683.45	10.00	80	90	20	20	150	150
P40	20x40	2073.45	10.00	80	90	20	20	150	150

Coordenadas (cm)	Nome
341.75	P7, P19, P27
341.75	P8, P28
649.25	P9, P20, P29
649.25	P1
956.75	P10, P30
1264.25	P2, P11, P21, P31
1683.45	P39
1690.95	P3
1694.45	P22
1695.95	P12, P32
2060.95	P13, P23, P33
2065.95	P4
2073.45	P40
2492.60	P24, P34
2492.62	P14
2800.11	P15, P35
2800.11	P16, P26
3107.60	P16, P26, P36
3315.10	P5, P17, P37
3715.10	P6, P38
3722.60	P18, P28

Coordenadas (cm)	Nome
1162.70	P1, P2, P3, P4
1162.70	P5, P6
1162.70	P8, P10, P15, P17
935.00	P7, P9, P11, P12, P13, P14, P16, P18
610.00	P19, P20, P21, P22, P23, P24, P25, P26
285.00	P27, P28, P31, P32, P33, P34, P36
277.50	P28, P30, P35, P37, P38
10.00	P39, P40

Vigas				Pilares			
Nome	Seção (cm)	Elevação (cm)	Nível (cm)	Nome	Seção (cm)	Elevação (cm)	Nível (cm)
V1	15x30	0	0	P1	25x25	0	0
V2	15x30	0	0	P2	25x25	0	0
V3	15x30	0	0	P3	25x25	0	0
V4	15x30	0	0	P4	25x25	0	0
V5	15x30	0	0	P5	15x30	0	0
V6	15x30	0	0	P6	15x30	0	0
V7	15x30	0	0	P7	15x30	0	0
V8	15x30	0	0	P8	15x30	0	0
V9	15x30	0	0	P9	15x30	0	0
V10	15x30	0	0	P10	15x30	0	0
V11	15x30	0	0	P11	15x30	0	0
V12	20x30	0	0	P12	15x30	0	0
V13	15x30	0	0	P13	15x30	0	0
V14	15x30	0	0	P14	15x30	0	0
V15	15x30	0	0	P15	15x30	0	0
V16	15x30	0	0	P16	15x30	0	0
V17	15x30	0	0	P17	15x30	0	0
V18	15x30	0	0	P18	15x30	0	0
V19	15x30	0	0	P19	15x30	0	0
V20	15x30	0	0	P20	15x30	0	0
V21	15x30	0	0	P21	15x30	0	0
V22	15x30	0	0	P22	15x30	0	0
V23	15x30	0	0	P23	15x30	0	0
V24	15x30	0	0	P24	15x30	0	0
V25	15x30	0	0	P25	15x30	0	0
V26	15x30	0	0	P26	15x30	0	0
V27	15x30	0	0	P27	15x30	0	0
V28	15x30	0	0	P28	15x30	0	0
V29	15x30	0	0	P29	15x30	0	0
				P30	15x30	0	0
				P31	15x30	0	0
				P32	15x30	0	0
				P33	15x30	0	0
				P34	15x30	0	0
				P35	15x30	0	0
				P36	15x30	0	0
				P37	15x30	0	0
				P38	15x30	0	0
				P39	20x40	0	0
				P40	20x40	0	0



Características dos materiais		
Elemento	ck (kgf/cm²)	Ecs (kgf/cm²)
Vigas	250	241500
Pilares	250	241500
Sapatas	250	241500

Legenda dos pilares		Legenda das vigas e paredes	
	Pilar que passa		Viga

RELAÇÃO DO AÇO					
ACO	N	DIAM (mm)	QUANT	C.UNIT (cm)	C.TOTAL (cm)
CA50	1	8.0	18	128	2304
	2	8.0	174	98	17052
	3	8.0	66	88	5808
	4	8.0	18	108	1944
	5	8.0	108	88	9504
	6	8.0	72	98	7056
	7	8.0	30	108	3240

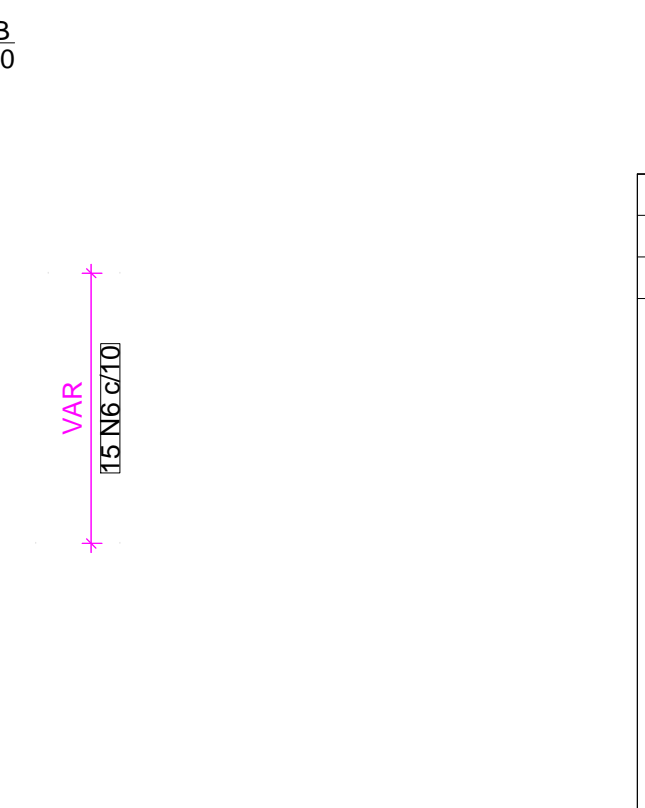
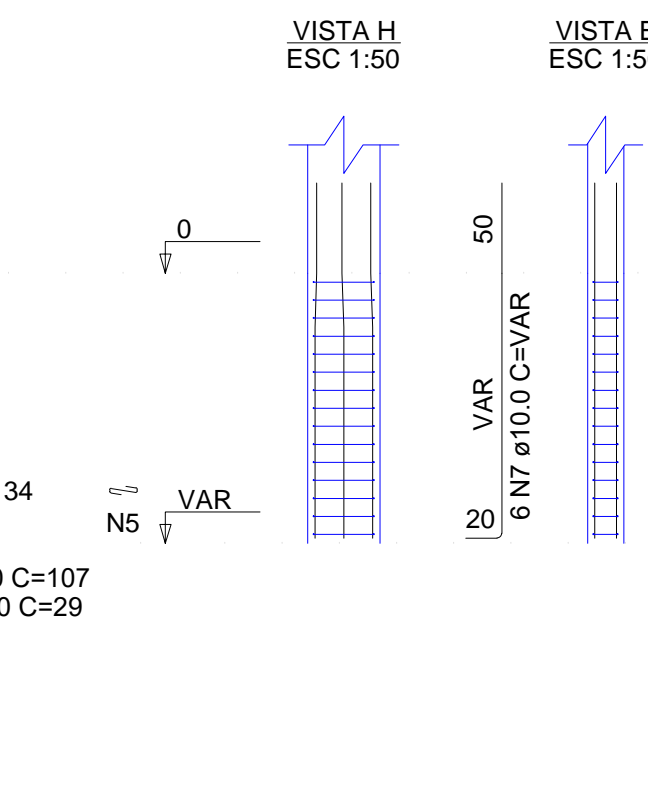
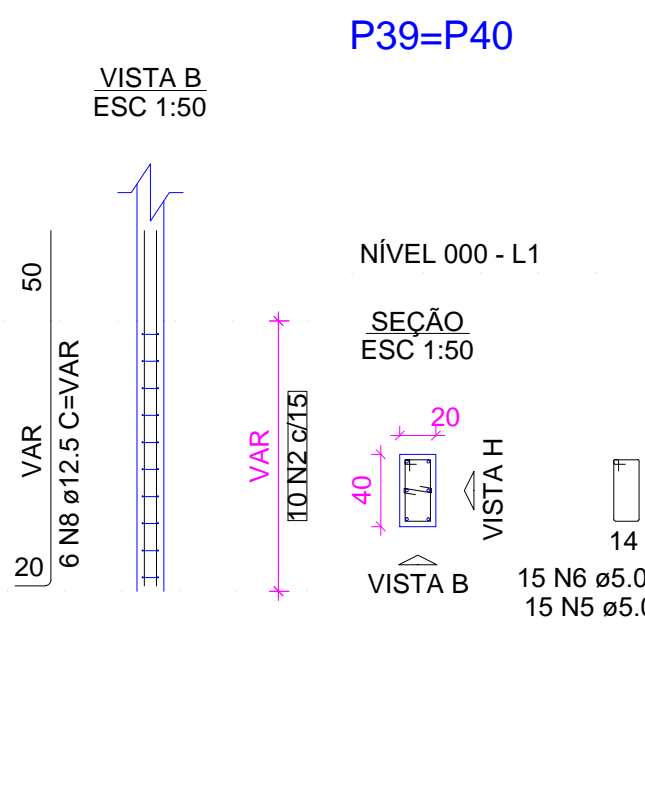
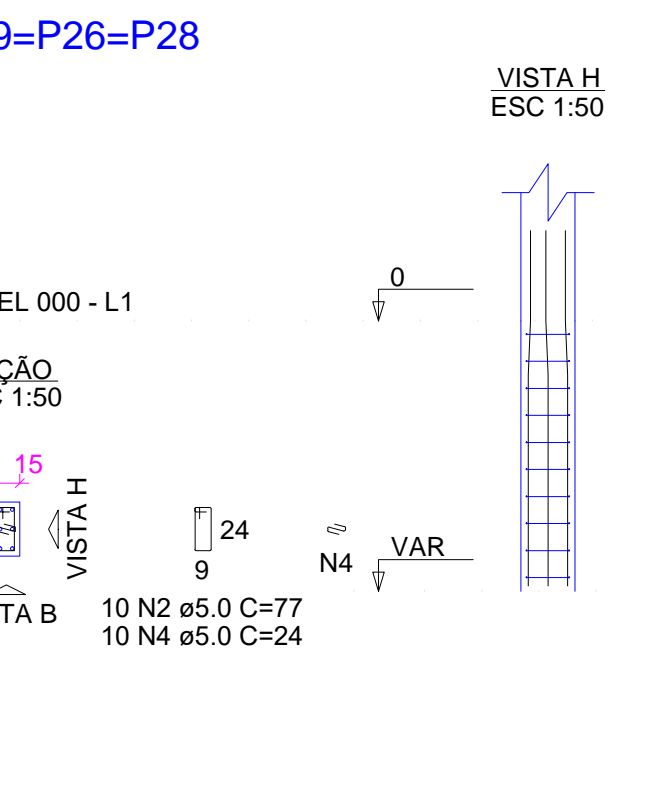
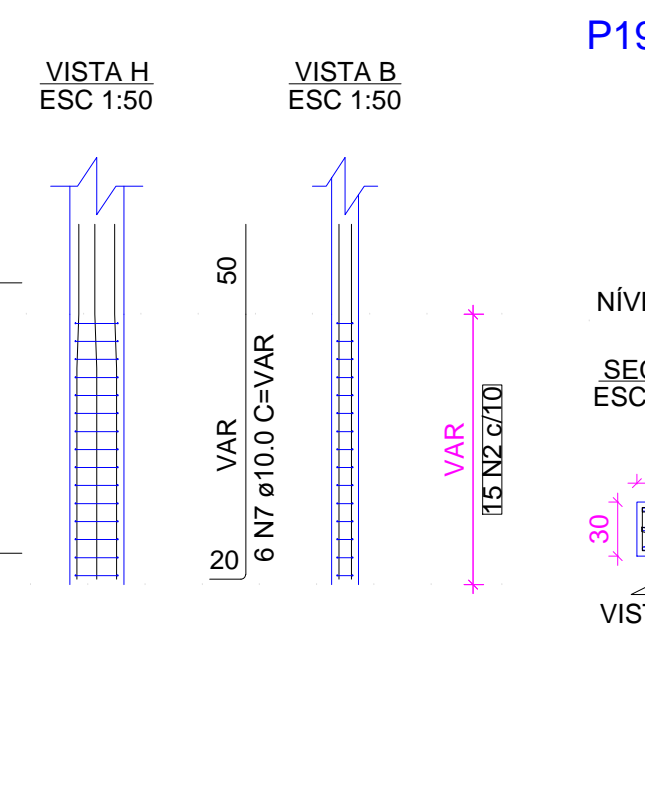
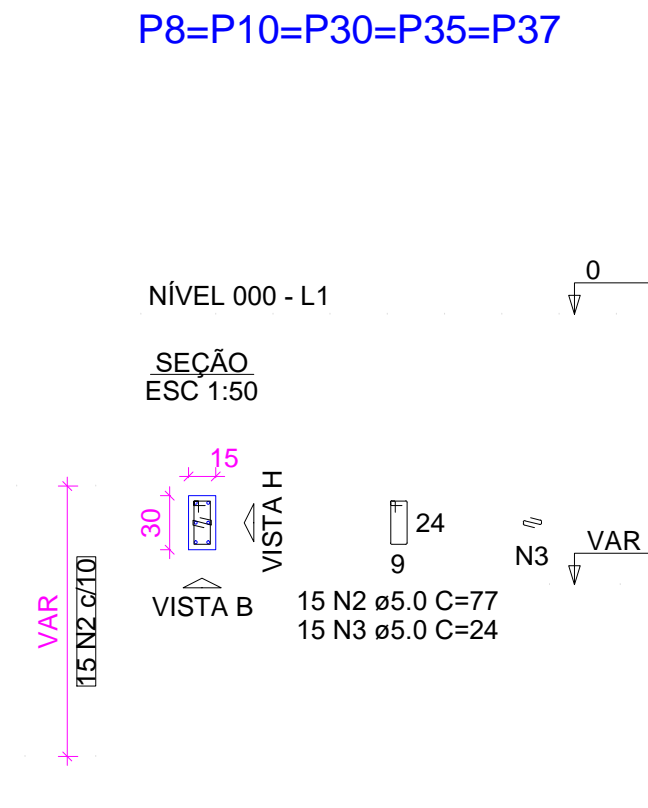
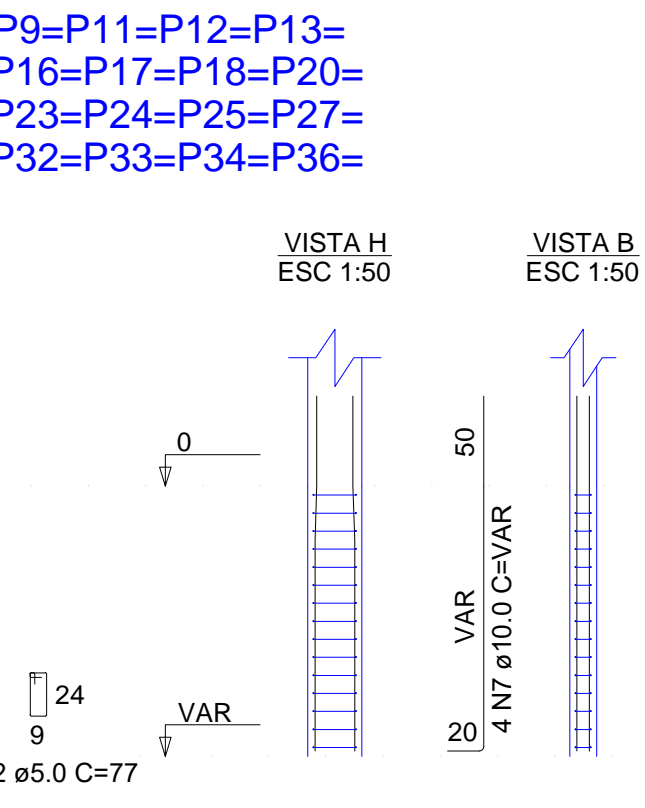
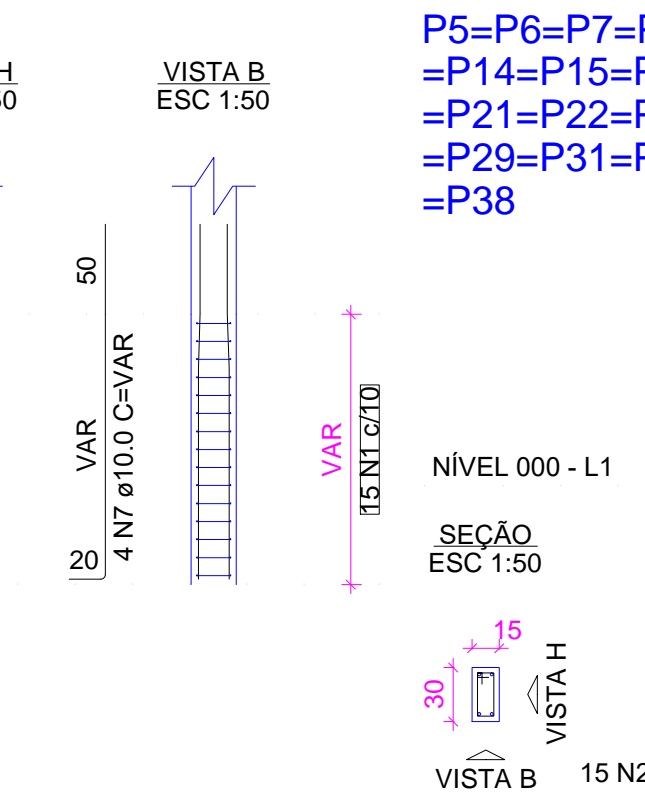
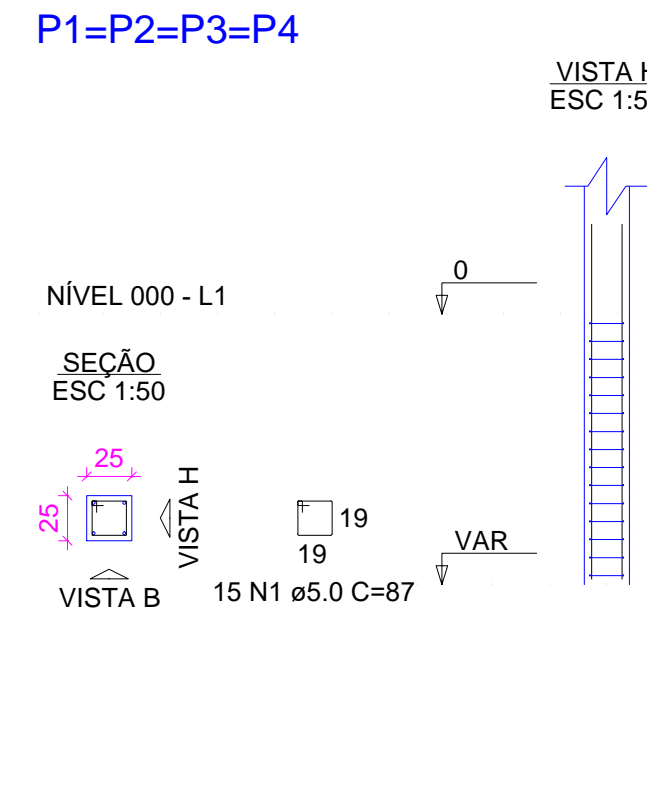
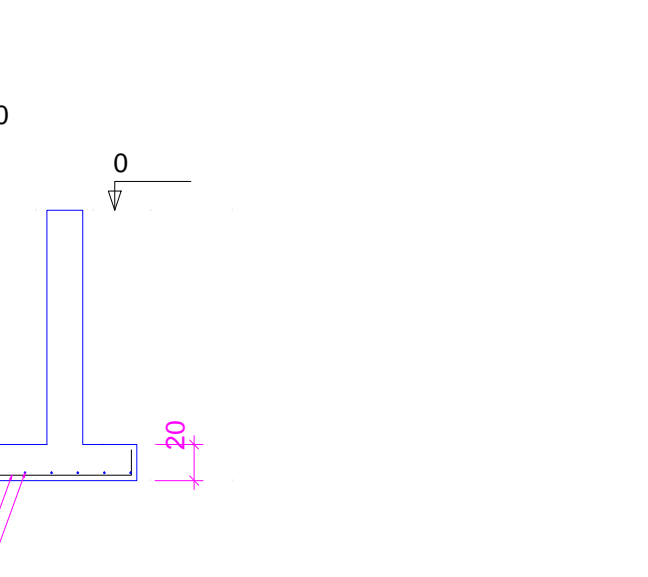
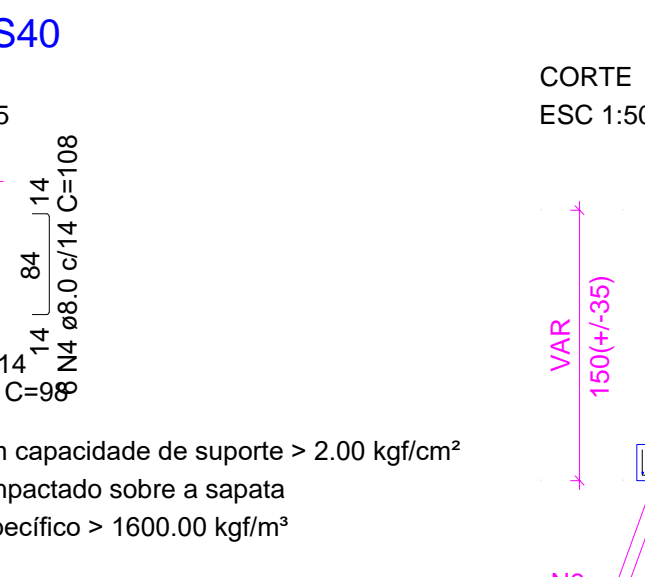
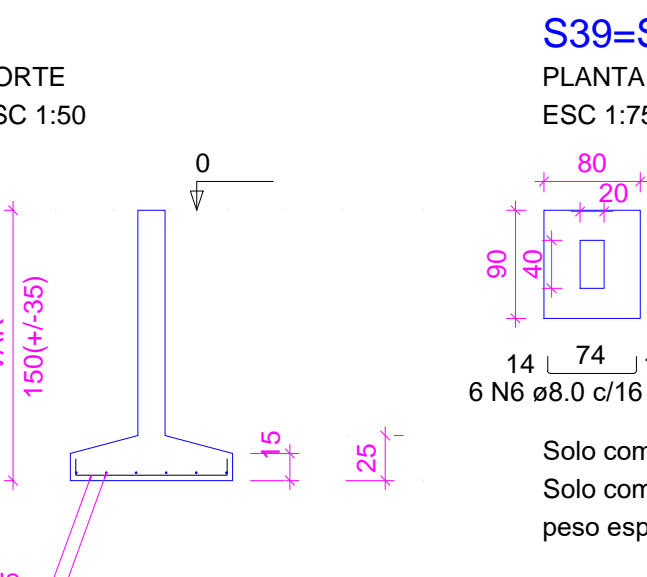
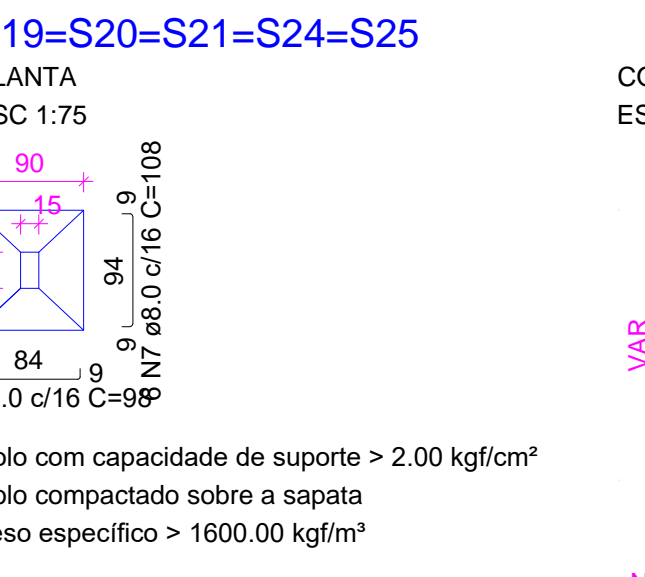
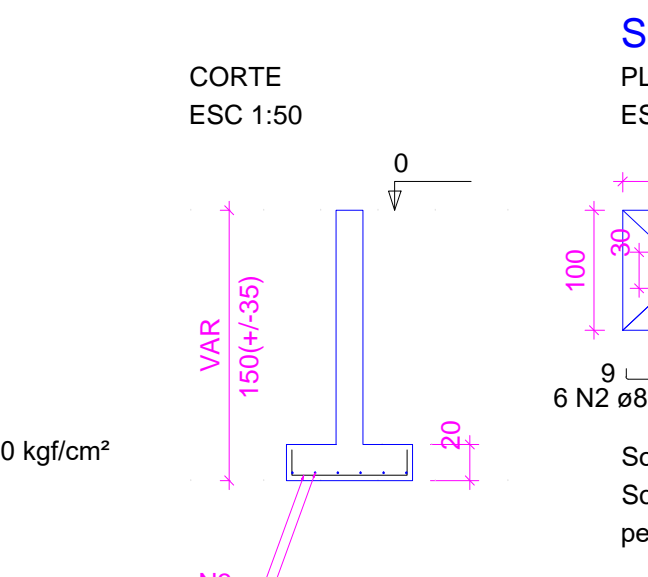
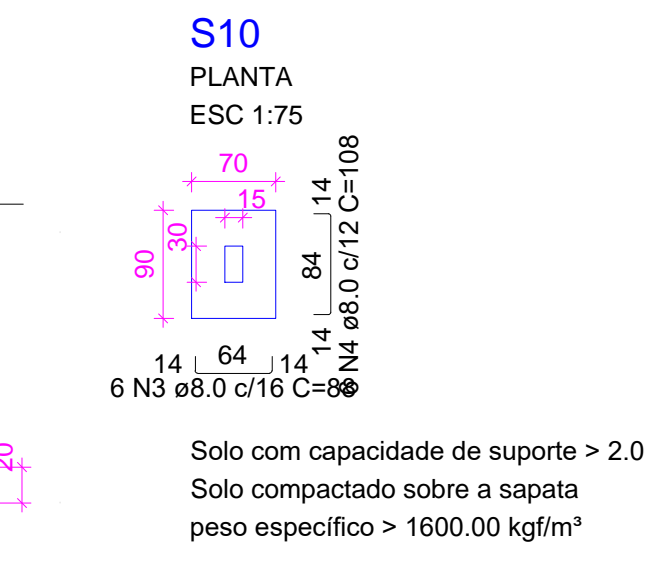
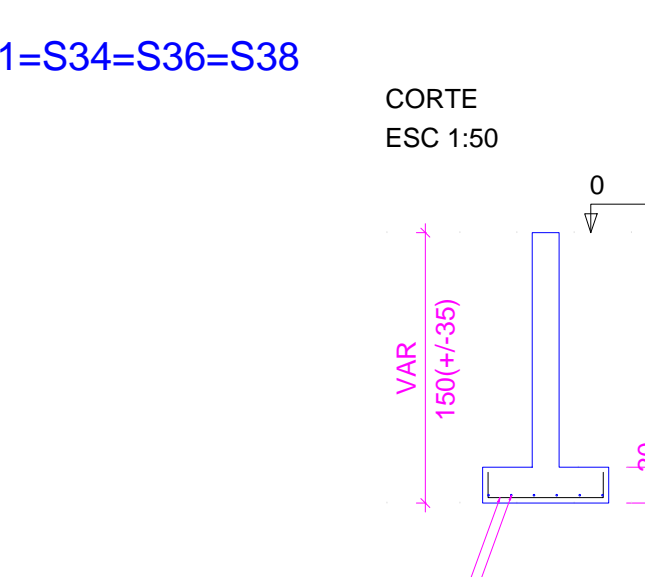
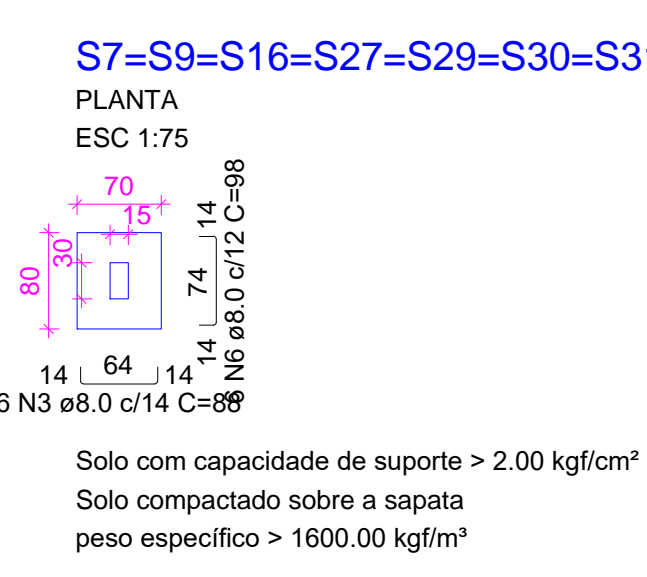
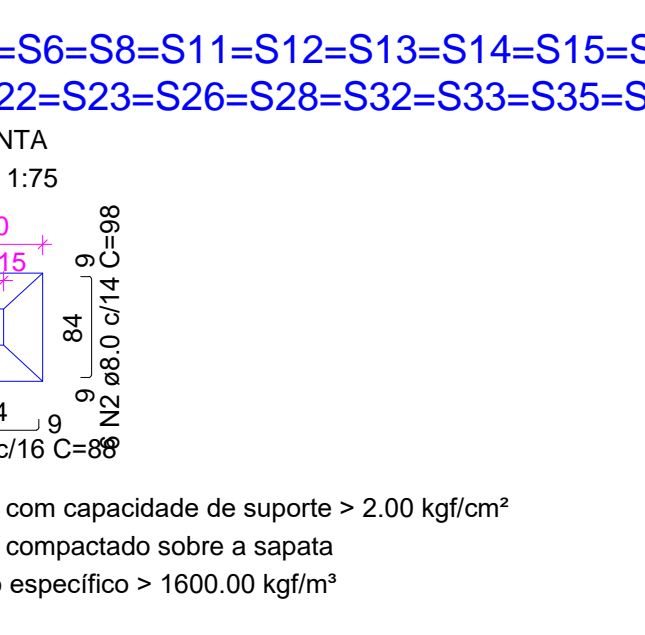
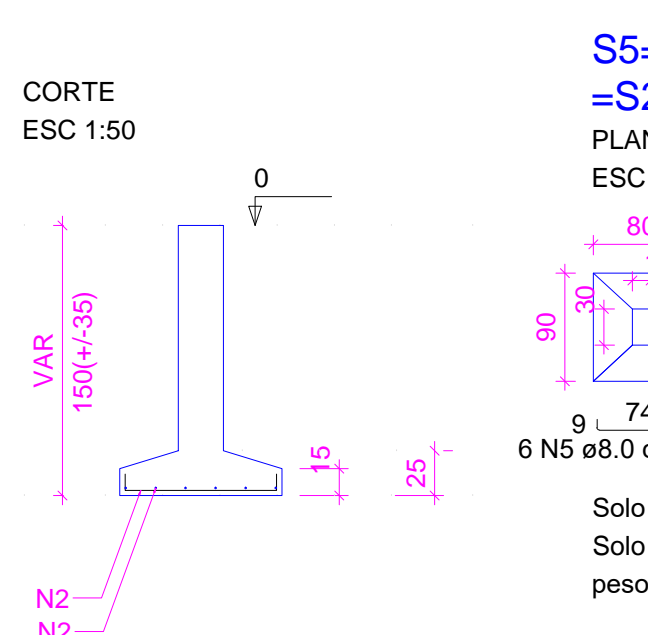
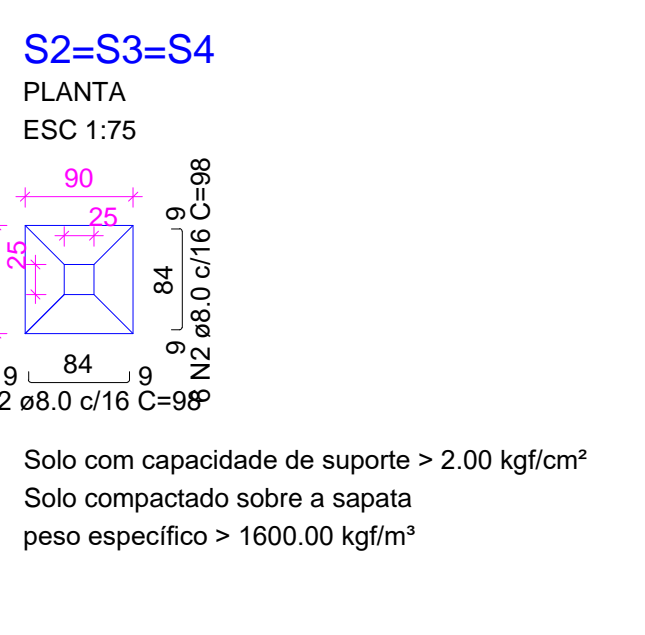
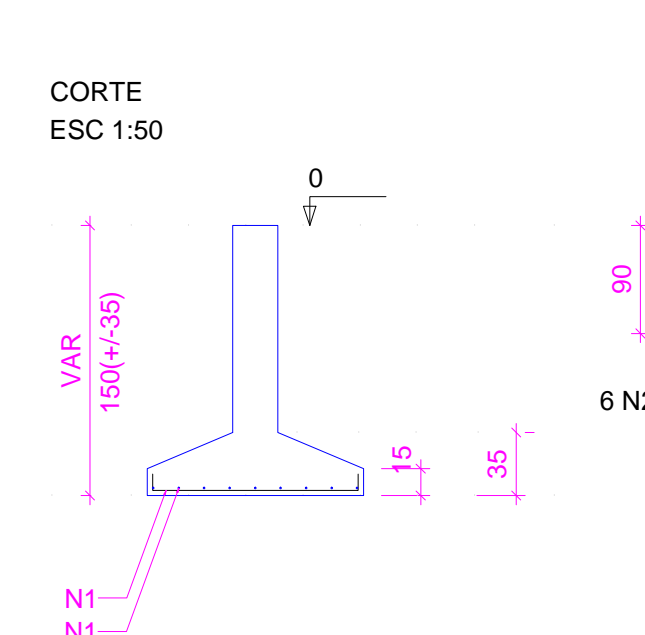
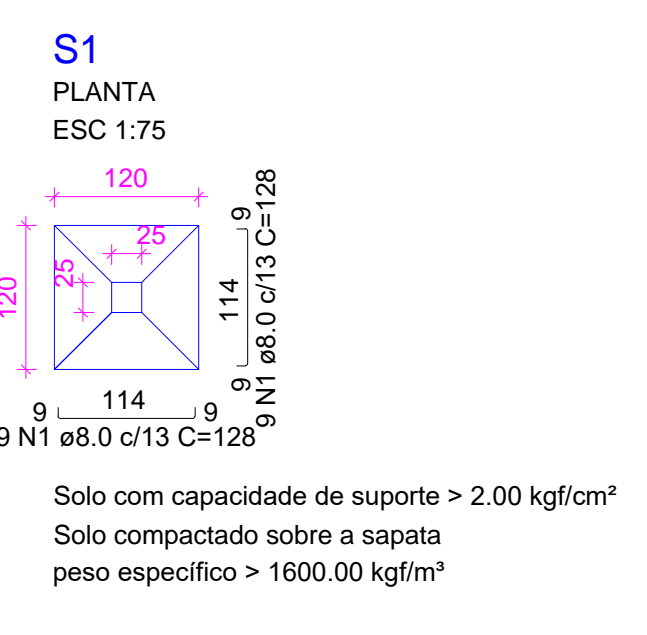
RESUMO DO AÇO				
ACO	DIAM (mm)	C.TOTAL (m)	PESO + 10% (kg)	
CA50	8.0	469.1	203.6	
PESO TOTAL (kg)				
CA50			203.6	

Volume de concreto (C-25) = 5.72 m³
Área de forma = 22.37 m²

RELAÇÃO DO AÇO					
ACO	N	DIAM (mm)	QUANT	C.UNIT (cm)	C.TOTAL (cm)
CA60	1	5.0	60	87	5220
	2	5.0	495	77	38115
	3	5.0	75	24	1800
	4	5.0	30	24	720
	5	5.0	30	29	870
	6	5.0	30	107	3210
CA50	7	10.0	162	VAR	VAR
	8	12.5	18	VAR	VAR

RESUMO DO AÇO			
ACO	DIAM (mm)	C.TOTAL (m)	PESO + 10% (kg)
CA50	10.0	348.3	236.2
CA60	12.5	38.5	40.8
CA60	5.0	499.4	84.7
PESO TOTAL (kg)			
CA50		277	
CA60		84.7	

Volume de concreto (C-25) = 2.91 m³
Área de forma = 55.50 m²



02
01
Nº DATA

REVISÃO
PROJETO:
DESENHO
APROVAÇÃO

PROJETO ESTRUTURAL BLOCO 01
C.E.I. PANACUI

CLIENTE:
MUNICÍPIO DE MARCO

LOCAL:
DISTRITO DE PANACUI

CONTEÚDO:
1 Planta de Localização
2 Detalhamento das Sapatas
3 Detalhamento dos Pilares Nível 000

ESCALA: DESENHO: PRANCHA:
INDICADA: SEINFRA
DATA: 01/07
SETEMBRO / 2021



AV. PREFEITO GUSTAVO ESTERHO, S/N
CENTRO - MARCO - CE - 82500-000
FONE: (85) 3311-1111 FAX: (85) 3311-1111
WWW.MARCO.CE.GOV.BR
CNPJ: 07.968.140/0001-47